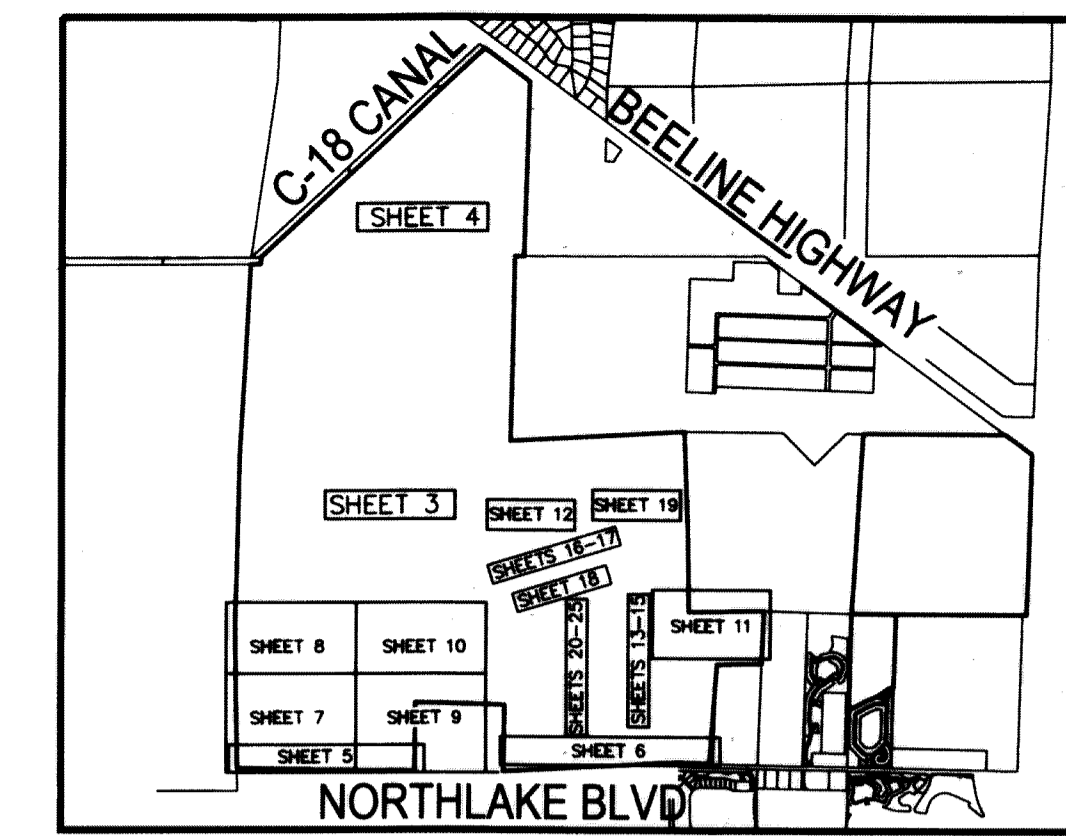
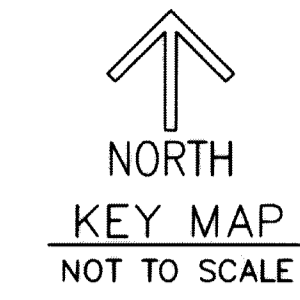


AVENIR

BEING A PORTION OF SECTIONS 28, 32, 33,
TOWNSHIP 41 SOUTH, RANGE 41 EAST,
TOGETHER WITH ALL OF SECTIONS 4, 9 AND 10,
AND A PORTION OF SECTIONS 5, 8, 14, 15, 16 AND 17,
TOWNSHIP 42 SOUTH, RANGE 41 EAST,
CITY OF PALM BEACH GARDENS, PALM BEACH COUNTY, FLORIDA

THIS INSTRUMENT PREPARED BY
RONNIE L. FURNISS
OF
CAULFIELD and WHEELER, INC.
SURVEYORS - ENGINEERS - PLANNERS
7900 GLADES ROAD, SUITE 100
BOCA RATON, FLORIDA 33434 - (561)392-1991
CERTIFICATE OF AUTHORIZATION NO. LB3591
NOVEMBER 2018



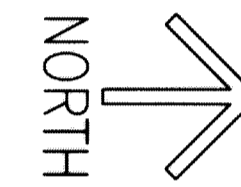
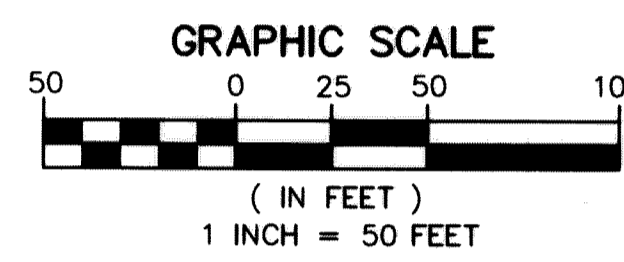
SHEETS 1-2 COVER
SHEETS 3-4 OVERALL SITE
SHEETS 5-6 DETAIL SOUTH BOUNDARY
SHEETS 7-10 DETAIL CONSERVATION AREAS
SHEET 11 DETAIL PARCEL E/G
PARK/CIVIC/RECREATION
SHEET 12 DETAIL CITY ANNEX TRACT
& PARCEL A-4
SHEETS 13-18 DETAIL TRACT R1
SHEET 19 DETAIL PARCEL C
SHEETS 20-25 DETAIL TRACTS R2 & R3

SHEET 13 OF 25

97

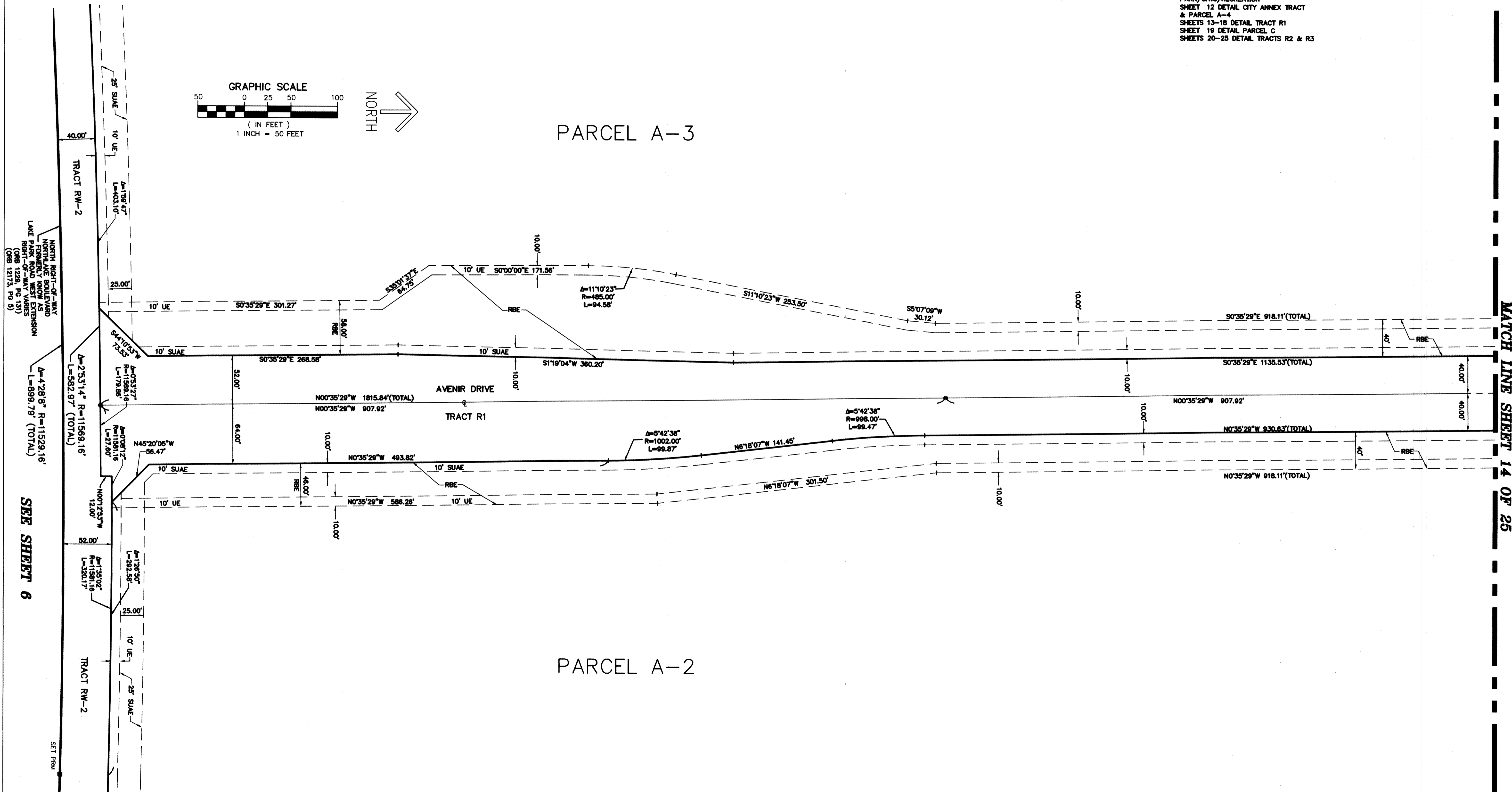
LEGEND/ABBREVIATIONS

- | | |
|--------------------------------------|--|
| CL - CENTERLINE | O.R.B. - OFFICIAL RECORD BOOK |
| Δ - DELTA (CENTRAL ANGLE) | FND PBC - FOUND PALM BEACH COUNTY SURVEY MONUMENT |
| AC - ACRES | PBG - PALM BEACH GARDENS |
| AE - ACCESS EASEMENT | R - RADIUS |
| CB - CHORD BEARING | RB - RADIAL BEARING |
| CD - CHORD DISTANCE | RW - RIGHT-OF-WAY |
| CDD - COMMUNITY DEVELOPMENT DISTRICT | RF - RIGHT-OF-WAY |
| DE - DRAINAGE EASEMENT | S.F.W.M.D. - SOUTH FLORIDA WATER MANAGEMENT DISTRICT |
| DB - DEED BOOK | SF - SQUARE FEET |
| ESMT - EASEMENT | SR - STATE ROAD |
| L - ARC LENGTH | SUAE - SEACOAST UTILITY AUTHORITY EASEMENT |
| RBE - ROADWAY BUFFER EASEMENTS | UE - UTILITY EASEMENT |
| LB - LICENSED BUSINESS | ■ PRM - DENOTES PERMANENT REFERENCE MONUMENT |
| MON - MONUMENT | ● 5/8" IRON ROD WITH CAP STAMPED "C&W PRM LB3591" |
| PB - PLAT BOOK | ● - DENOTES PERMANENT CONTROL POINT |
| PG - PAGE | |



PARCEL A-3

PARCEL A-2



MATCH LINE SHEET 14 OF 25